

Multi-User 3/2 Way Pneumatic Control Valve 3500 bar

Z 80-4e

21.08.2012



Application:

The valves are used as multi-operation control valves for gun operation as well as control valves for hydroforming, hydraulic installations, etc.

If intended to be used for gun control only use electrical guns

Model:

3/2 Way

Material:

All parts coming into contact with fluid are stainless steel
Also available in seawater-resistant materials on request

Operation:

Pneumatic

Valve fails to port A

Technical data:

Part no.: 7022234
Medium: max. 1000 mPas
Flow rate: max. 50 l/ min
Working pressure: max. 3500 bar
Air supply: Air pressure 6 - 8 bar (dry; no oil)

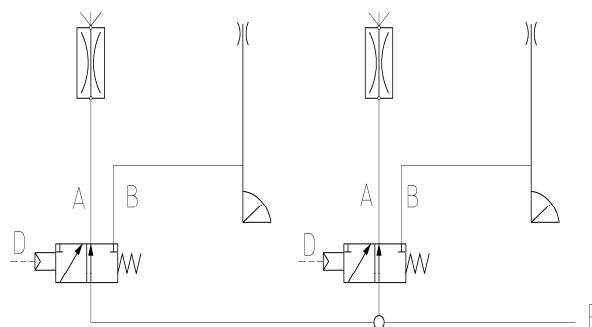
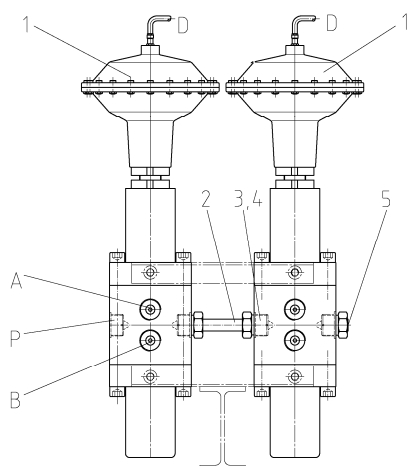
Ports: 1x Inlet M 26 x 1.5 f. with pressure screw
and pressure ring M 14x1.5 LH
1x outlet M 26 x 1.5 f. with pressure screw
and pressure ring M 14x1.5 LH

Part no.:

1x operator 7023678
2x operators 7020916
(f.e.see figure shown below)
further operator on request

Version for each operator with:

3/2 way valve, flow divider and 5m hose
without guns and nozzles



D = Air connection
A = Outlet Flow Divider

P = Pressure inlet
B = Outlet Gun